

2.3 ADJUSTABLE MOUNTING BRACKET

With the adjustable mounting bracket, the uPASS Reach can be 'aimed' at the desired detection area. It can also be used for mounting the reader to round or square masts (see appendix 7.3.5B for part numbers).

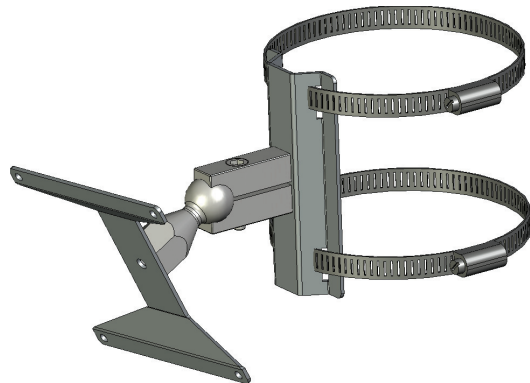


Figure 4: Adjustable mounting bracket

Once the adjustable mounting bracket is assembled, attach the bracket to the wall or mast. After that the uPASS Reach can be mounted onto the bracket. The ball and socket joint can be used to adjust the reader's orientation. Tighten the hex screw on top of the joint to fix the correct orientation.

Note
Maximum diameter for round masts 125mm (4.9 inch)

Maximum diameter for square masts 100mm (3.9 inch)

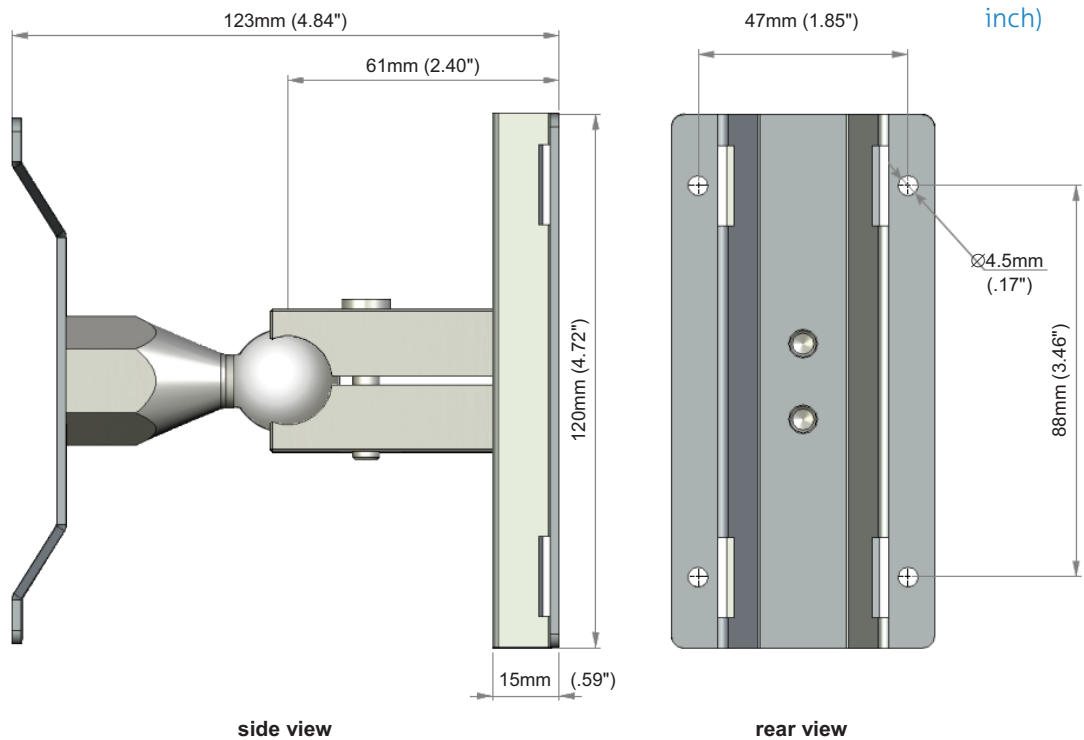


Figure 5: Adjustable mounting bracket dimensions (in mm)